

STUDENT HOUSING

College at Brockport

THOMPSON HALL RENOVATION

- **LEED Gold Certified**
- **LEED: 6 EA Points, 35% better than ASHRAE 90.1 2004**
- **Gold Level Award for Engineering Excellence from ACEC-NY**
- **Project Value: \$10.2 million**
- **Contact: Richard Hansen, DASNY, (585) 461-1574**

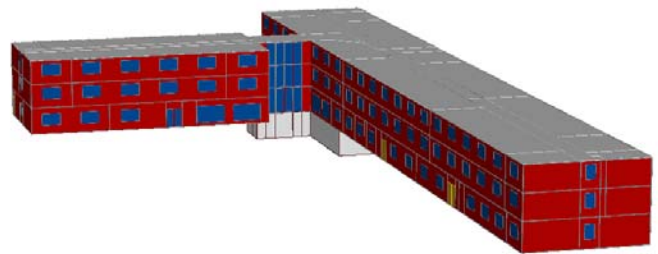


Pathfinder Engineers and Architects designed the rehabilitation of Thompson Hall, a three-story, 48,000 sq. ft. residential building constructed in 1957. The renovation consists of interior updates to approximately 150 beds, apartments, meeting rooms, the College's Residence Life Offices, the addition of student lounges and study lounges on each floor and exterior renovations including an elevator/lobby addition.

The primary purpose of this project was to improve functionality, appearance and accessibility, and a complete renovation to the mechanical systems (heating, plumbing, etc.), electrical systems (power, lighting, fire alarm, IT, security, etc.) within the residence hall and provide fire protection.

Pathfinder developed the space program and conceptual floor plans during the pre-schematic phase. The project team worked with DASNY and the college to formulate the project scope based upon previous residence hall upgrades; a needs assessment; code compliance review; and provided an asbestos survey report.

In addition to meeting Executive Order 111, Pathfinder incorporated measures to achieve LEED Silver Certification using the USGBC rating system. Pathfinder provided energy modeling.



Pathfinder reduced energy consumption through design of an albedo roof system and by improving the building envelope with new insulation and new window units.

The building features high efficiency plumbing fixtures and a rain water harvesting system to flush water closets and urinals. To reduce water usage, Pathfinder specified high efficiency plumbing fixtures. The design features low VOC materials, sustainable "green" finishes, energy and lighting controls and addresses indoor air quality and day lighting.



P A T H F I N D E R
ENGINEERS & ARCHITECTS LLP

134 South Fitzhugh Street ■ Rochester, NY 14608-2268 ■ P 585-325-6004 ■ 585-325-6005
info@pathfinder-ea.com ■ www.pathfinder-ea.com